



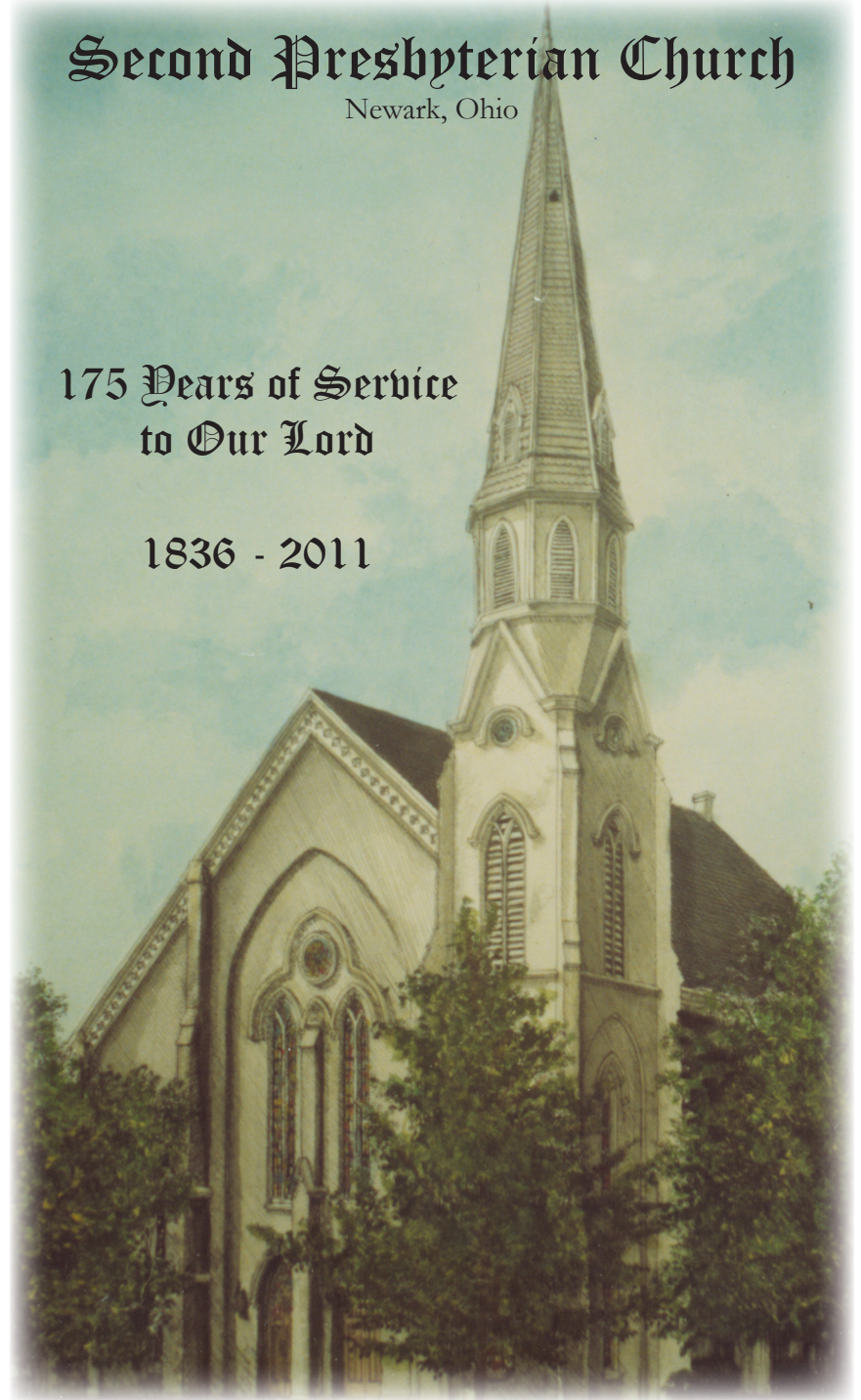
circa 1886

Second Presbyterian Church

Newark, Ohio

175 Years of Service
to Our Lord

1836 - 2011



Second Presbyterian Church
Newark, Ohio

**175 Years of Service
to Our Lord**

1836 - 2011

Second Presbyterian Church

42 East Church Street • Newark, Ohio 43055

www.spcnewark.org

Charles C. Smith III - Pastor

Sentence Sermon Telephone
740-345-3623

Telephone
740-349-8691

Radio Ministry
WCLT - AM
11:15 AM Every Sunday

EVENTS DURING THE ANNIVERSARY YEAR

Sunday - February 27, 2011

Official Introduction to Anniversary Year
10 AM Worship with
Historical and Symbolic Presentation by Jo Nelson
followed by a *Congregational Brunch*
Second Presbyterian Church

Friday - April 6, 2011

7 PM
Ohio University Women's Choral Concert
Second Presbyterian Church

Sunday - June 19, 2011

10 AM Worship
Elevator Fund Campaign Presentation
Connecting the Past to the Future
Building and Maintenance Committee
Second Presbyterian Church

Sunday - September 11, 2011

9:30 & 11 AM Worship
Sunday School Rally Day
Followed by a *Congregational Picnic*
Christian Education Committee
Second Presbyterian Church

Sunday - March 13, 2011

3 PM
Newark High School
Choral Concert
Second Presbyterian Church

Thursday - April 17, 2011

7:30 PM
Grove City College Choral Concert
Second Presbyterian Church

Thursday - August 11, 2011

6 PM
Open Grill and Ice Cream Picnic
Rotary Park, Newark, Ohio
Membership, Evangelism &
Fellowship Committee

Monday October 10, 2011

7 PM
Newark High School
Orchestra Concert
Second Presbyterian Church

Sunday - November 6, 2011

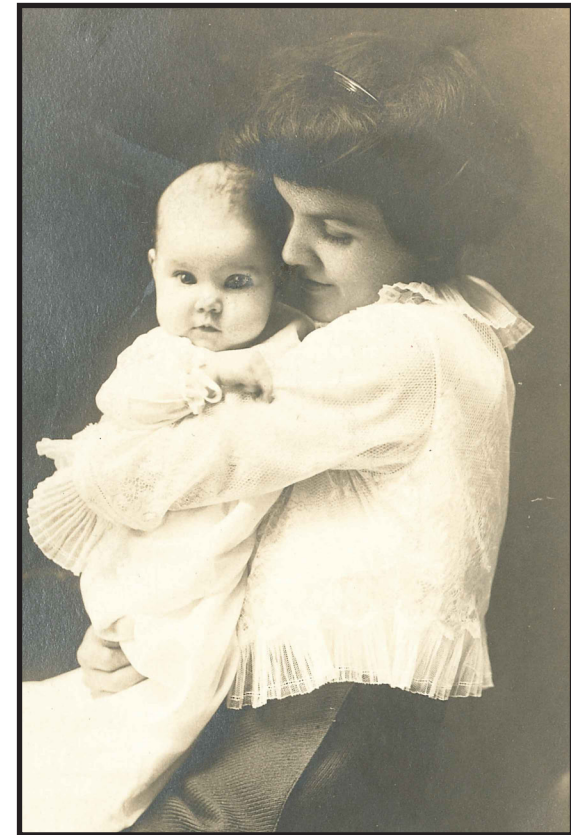
3 PM
175th Anniversary Celebration Service
Followed by a *Reception*
Second Presbyterian Church

175TH ANNIVERSARY COMMITTEE

Larry Brough
Mary Ann Barnett
Norma Bartlett
Kandi Cook
Debbie Kullman
Charlie Smith

Beth & Rick Black
Sally & Tom Henry
Kathy Fickes
Jo Nelson
Bill Milbrandt

Longest Membership



Ann Linda Cooper McKinney

Born October 2, 1913

Enrolled in "Cradle Roll" Department
November 30, 1913

Confirmed in 1926, which makes her an 85 year member of
Second Presbyterian Church

Our Youth



New York 9-11 Disaster Relief Trip

September 17-19, 2001



Dedication

Norma Bartlett has been a member of Second Presbyterian Church for 47 years. During this time she has served in numerous aspects of church life. She is the historian for Presbyterian Women, and was a recipient of the PW Woman of the Year Award, which bestowed on her an honorary lifetime membership in Presbyterian Women. She serves on the Worship and Music Committee and has been its chairperson in the past. She arranges for acolytes to serve at special holiday services, she directs holiday decorating at the church, and she has organized usher teams for Sunday worship services. She has cared for the church gardening, cooked for church functions, and was an assistant church secretary for a few years. Other forms of service have been teaching Sunday School and Bible School. She was ordained as an Elder in 1995, after which she assisted with serving communion for a period of time. She has a huge archive of pictures, documents, and memorabilia that document church life since Second Presbyterian's beginning. Her keen interest in preserving the rich history of our church has resulted in the hallway picture gallery of Second Presbyterian's pastors, and a display case she maintains that is filled with historical pictures and documents.

In gratitude for all she has done for our church, we dedicate this anniversary booklet, with all its collected history of 175 years, to our own church historian, Norma Bartlett.

The History of Second Presbyterian Church

The Presbyterian Church has been part of Newark since 1802, when the city that Second Presbyterian Church calls home was laid out. A minister, Rev. McDonald, a missionary, the Rev John Wright, and a pioneer preacher, the Rev. James Scott, conducted services until 1808, the year a small group of worshippers organized the First Presbyterian Church of Newark.

A Rev. Beecher preached the first sermon for the fledgling church. His sister, Harriet Beecher Stow, later wrote the controversial book, "Uncle Tom's Cabin." The first minister of the church was Rev. George Van Eman. He was followed by the Rev. William Wylie in 1832, who remained with the church for more than 22 years.

The records of the First Church show a series of difficulties extending through several years, culminating in December, 1836 with the withdrawal of more than 20 members who organized the Second Presbyterian Church. The problems were based on the calling of Rev. Wylie and on doctrinal differences.

One of these was the doctrine of infant damnation, which held that a child who was not baptized would never be received into the kingdom of heaven and would be eternally damned. Mrs. Samuel D. King (Mary Ann) was one of a group that had been opposed to the calling of Rev. Wylie from the start. She had a child who died in infancy and was never baptized. During the funeral service, the doctrine of infant damnation was invoked by Rev. Wylie. This so infuriated Mrs. King that she walked out of the service and motioned her friends to follow her.

Shortly after in April, 1836, a petition signed by 51 worshippers of the First Church was presented to Lancaster Presbytery asking to form the new Second Church of Newark. Presbytery granted the request eight months later on December 27 and Second Presbyterian Church was born.

Without a minister or permanent home for two years, the new church met in an old schoolhouse, a courthouse jury room and in a room above a member's store. By February 17, 1839 however, the congregation had a home to call its own – a frame church with stone walls built for \$4,800. Soon after, the Rev. Alexander Duncan, a seminary student, became the first pastor of the church, and remained for 17 years.

SLAVES, BE OBEDIENT TO THOSE WHO ARE YOUR EARTHLY MASTERS (EPH. 6:5)

In 1838, the slavery issue and differences in doctrine divided the entire Presbyterian denomination into Old School (conservative-extreme Calvinist) and New School (liberal). First Church was a member of the Old School Presbytery and Second Church became a member of the New School Presbytery. The cleavage in Central Ohio remained so deep that the Presbyteries were not reunited until 1870.

Before the calling of Second Presbyterian's second minister, the Rev. Simon J. Humphrey, a proposition was made by First Presbyterian looking to the reunion of the two churches, but nothing resulted. So, on June 8, 1854, Rev. Humphrey was installed and served the church until late 1861.

Chancel Choir



FIRST ROW: Barb Emler, Barb Ransopher, Amy Mader, John Cooper, Nancy LeBlanc
SECOND ROW: Judy Riggs, Sue Moore, Karen Bunning, Joan McKay, Ruth Mullen, Ruth Cooper
THIRD ROW: Fred Pyle, Sue Miller, Hank Speaks, Jim Snyder, Bob Pflaumer
FOURTH ROW: Rick Black, Laura Dulle

Handbell Choir



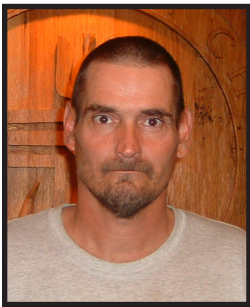
FIRST ROW: Judy Riggs, Joanne Moreland, Jo Nelson, Amy Mader, Lynda Nabors, Sandy Mercer, Joan McKay
SECOND ROW: Barb Emler, Sue Miller, Becky Kirk, Christie Williams, Leland Lescalleet, Laura Dulle

Staff

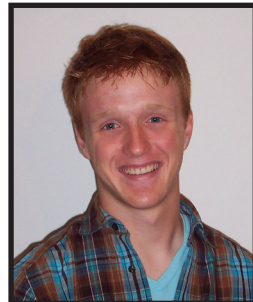


FIRST ROW: Betty Gartner, Administrative Assistant; Paula Rife, Financial Secretary; Doug Kullman, new Financial Secretary.

SECOND ROW: Charlie Smith, Pastor, Head of Staff; Lou Mounts, Treasurer; Tom Rhodes, Sexton; Rick Black, Organist and Music Administrator; Doug Devor, Director of Christian Education; Laura Dulle, Choir Director.



George Wentworth, Assistant Sexton



Jesse Barron, Praise and Worship Music Leader

The Rev. William Lusk, Jr. filled the pulpit for one year until the Rev. Rollin A. Sawyer was called in October of 1862. He served the congregation through the Civil War period, until 1866.

During the tenure of the fourth minister, the Rev. Daniel Tenny, who was installed May 1, 1867, First and Second churches again discussed a reunion. They agreed there should be united action as a church, but that there also was room for two distinct congregations.

ON THIS ROCK I WILL BUILD MY CHURCH (MATT. 6:18)

During the pastorate of Rev. Tenny, work on the present home of Second Presbyterian began. On June 13, 1868, the corner stone was laid and just seven months later the first service was held in the lower room of the church.

The upper structure of the church was completed and the dedication was held April 12, 1874. At this time the congregation numbered 218. The total cost of the new building was \$31,000.

In 1887, construction started on the manse at the location which now is a part of the church school annex. The corner stone of the educational building was laid on July 28, 1929. It contains the history of the church, a church bulletin and a list of the members. The building was completed for \$135,000, including the cost of the lot and financing. Dedication ceremonies were April 6, 1930.

The next major construction project – the new church school annex – was completed in 1955 at a total cost of \$60,000. Then in 1961, the exterior of the church was refinished and restored to its original beauty. One year later, the sanctuary chancel was remodeled and the organ was renovated for a total cost of \$35,000. During the months of July and August that year, joint services were held at First Presbyterian Church.

In the years between 1976 and 1981, the sanctuary underwent further remodeling, including the installation of new carpeting; and on the exterior, a new roof was installed and the building's surface was sandblasted.

The most recent major building project was the 1985 completion of the Youth Center in what once was the church's basement storage area. The center reflects the church's commitment to youth, while other groups also use and enjoy the facility. In addition, the Youth Center project encompassed the renovation of the parlor and chapel.

GIVE EAR, O MY PEOPLE, TO MY TEACHINGS (PS. 78:1)

The goal of most construction projects over the years was to expand education facilities. The term Sunday school now applies to both adults and children, and extends through the week.

The spiritual education of youth in the church thrives due to the commitment of teachers and parents. Youth Club and the Junior and Senior High Youth Fellowships combine fun with spiritual growth. Vacation Bible School starts the summer out right for Second Presbyterian youngsters and Junior Church during

those months gives them a feel for the order of worship. Then in ninth grade, a year-long communicant's course culminates with students joining the congregation as adult members.

Education also reaches around the globe with International Christian Youth Exchange (I.C.Y.E). Since 1962, 23 youths have spent one year abroad and the church has welcomed 17 foreign students here.

Learning about God, however, does not end with high school graduation. Adults participate in retreats, contemporary classes and Bible study. A new commitment to studying the Bible began in the fall of 1976 with the introduction of the Bethel Bible Series. Ten years later, 184 members had completed the two-year course.

Other aspects of education include church officer training and new member classes. Second Presbyterians take seriously their roles as officers, so before actual entry into office, they learn of their duties and responsibilities in the framework of Presbyterian beliefs and structure. The church also encourages new members to attend four sessions on the meaning of faith, basic beliefs of the church, Presbyterian tradition and Second Church in particular.

The education of youths and adults is aided by the church's own library, which at the end of 1985 offered 1,909 books on a variety of subjects.

HE BEGAN TO BUILD THE HOUSE OF THE LORD (1 KINGS 6:1)

Second Presbyterian was the source of a new congregation in 1871, during the pastorate of the fifth minister, the Rev. Howard Kingsbury. At a special meeting of Session on Christmas Day that year, 21 members of Second Church asked to leave the church family to organize a new church in Hanover. This they did, on December 30.

In 1907, a joint meeting of the Session of the First and Second Churches was held to ratify the formation of the Presbyterian Church in the Woodside District. So, the Woodside Presbyterian Church was born on July 25 that year.

The shortest term for a minister in the church's history was held by Rev. George A. Beattie, who served from March, 1878 to July, 1880. In December 1880, the Rev. R. R. Sutherland began serving the church. He preached the sermon when Second Presbyterian celebrated its fiftieth anniversary in December 1886. At this time, 378 members belonged to the church congregation. Dr. Sutherland's successor, the Rev. Julius W. Walden, began his work at the church in February 1888. After offering the church a ministry in preaching, teaching and pastoral activity, Walden resigned in October, 1892. Later that month, the Rev. Frank Grandstaff began serving as the ninth pastor until February, 1902.

SINGING AND MAKING MELODY TO THE LORD WITH ALL YOUR HEART (EPH. 5:19)

In 1898, the history of Second Presbyterian notes the importance of making a joyful noise to the Lord in worship when a quartet was organized to lead the music. From this beginning, a choir started, accompanied by Miss Florence King, the organist. In 1915, the quartet was replaced by a double quartet and the music

Dining Room

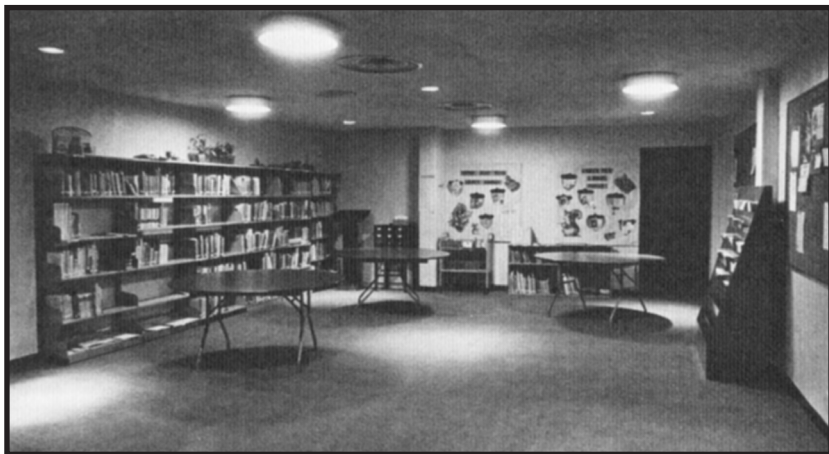
- then -



- now -

Church Library

- then -



- now -



program continued expanding.

Through the years, the church has maintained its musical heritage. Today, the voices of four choirs – the Adult Choir, the Junior/Senior Choir, Bel Melodia and Youth Club Singers – convey God's word through song.

Ring out the good news of Jesus Christ are three handbell choirs – the Touring Handbell Choir, Ladies Bells and Beginning Bells.

Musical highlights of the 1980s have been performances of Handel's "Messiah" and Bach's "Christmas Oratorio" with orchestra and the combined choirs of First and Second Presbyterian in our church sanctuary.

Enhancing the church's excellent music program are unique instruments that convey the joy of God with their sounds. In 1964, the carillon donated by Katherine Flory was installed and still welcomes Sunday morning worshippers. Most recently, a Steinway concert grant piano became part of the sanctuary, an endowed gift of Mary Florence Mason upon her death in 1985.

THE TREE GREW AND BECAME STRONG (DAN. 4:11)

At the turn of the century, the church had a membership of 560; total expenses for the year 1900 were \$7,114.

By contrast in 1986 – Second Church had nearly 1,300 members and an annual budget of \$336,400.

Helping to ensure the financial stability of the church is the goal of Second Church Fund, which provides investment income from gifts and bequests totaling \$91,950.

The church's tenth minister, the Rev. T. A. Cosgrove, came to Newark in January, 1904. The year 1911 marked the celebration of the diamond jubilee of the church. Dr. Sutherland returned to preach as he had for the fiftieth anniversary.

Just before the beginning of World War I, the Rev. Don D. Tullis began his ministry in January, 1913. Moved by the urgency of the times, Rev. Tullis resigned in 1918 to continue his war work with the Y.M.C.A. Second Presbyterian's eleventh minister, the Rev. Benjamin R. Weld, was called to serve beginning in January, 1919. He was succeeded in the fall of 1923 by the Rev. Otis G. Dale, who served the church until October, 1926.

One year later, after the Rev. C. S. Nickerson had served as interim pastor, the church called the Rev. Harold F. Wonder to become its minister until August of 1944. After a ministry of 17 years, the congregation was sorry to say goodbye to a most popular and distinguished pastor.

"FEED MY LAMBS" (JOHN 21:15)

Church records show the effects of the depression in early 1931, when the church's soup kitchen served between 28 and 65 undernourished children each day for lunch.

Although the economic conditions of the area improved over the years, Second Presbyterian is still helping feed and clothe the poor of Newark. The Care

Closet provides emergency food and clothing to those in need; in 1985, 941 families received food or clothing from the church. Second Presbyterian is part of the countywide Food Pantry Network.

The Care Closet program is the responsibility of the Board of Deacons, a body of 12 ordained persons charged with ministering to those in need. Deacons also visit the sick and shut-in, delivering flowers and words of faith and encouragement.

FOR IT IS YOUR REWARD IN RETURN FOR YOUR SERVICE (NUM. 18:31)

In 1936, Second Presbyterian celebrated its centennial. In its one-hundredth year, membership had grown to 712.

In 1944, Session granted Mrs. W.C. Miller permission to organize a Women's Association to take the place of three existing groups. Through the years, several women's organizations have evolved into the Women's Involvement Committee (W.I.C.).

Services sponsored by W.I.C. include mission giving through United Presbyterian Women; delivery of hot meals to shut-ins through Meals On Wheels; making children's clothes in sewing committee and providing mittens, hats and pajamas for L.E.A.D.S. at Christmas. W.I.C. also supports "Crossroads Ministries," a rural crisis center for troubled youth in Frazeyburg.

Women's Circles have continued throughout the church's history. Today, three groups meet at different times of the day so the women of the church can get together to study the Bible.

Both the women and men of the church enjoy further fellowship on their own softball teams. In addition, the men participate in a basketball league.

In 1946, a Men's Fellowship was established. The men of Second Presbyterian are still meeting to learn more about God forty years later - in the Saturday Morning Men's Group and during the week for the Men's Prayer Breakfast.

Not all church activities are divided, however. Couples Club gives husbands and wives of all ages a chance to join together for a meal and program.

Families appear together in the Church Directory, a pictorial guide that introduces members of the congregation to each other and to incoming new members.

Upon the departure of Rev. Wonder in 1944, the Session called the Rev. W.W. Illife to serve as interim pastor until the congregation called the Rev. Robert L. Swaim in February, 1946. In the fall that year, a twelve-member Board of Deacons was organized.

The Rev. James S. Bolen came from New Philadelphia to begin his pastorate at Second Church in July, 1951. During this time church membership grew rapidly and the Session and Board of Deacons expanded from 12 to 18 members. Also, the church called its first assistant minister, the Rev. David G. Forsberg in 1954. Rev. Forsberg was succeeded in 1958 by the Rev. Neil Avery Bartley, Jr.

In 1959, heavy rains caused area streams and the Licking River to flood their banks. The church served as a refuge during this time, opening its doors to

Garden



- then -

Dedication of Garden

(Left to Right)-Peg Tessmer, Ann Rose, Philip Rees, Marian Gillette, Margareta Bunning, Margaret Sabatino

In 1995, the Kathryn and Willis Rees Memorial was established for a memorial garden between the church and the office annex.



- now -

Future site of the new elevator tower and bridge, the church's anniversary gift to itself. A time capsule will be sealed in the complex during construction.

Narthex

- then -

*The once location of the Bunning
Family's Annual Moravian
Putz Display*



- now -



Gymnasium

with its new "stained glass" murals



those who were temporarily forced from their homes. After the sudden death of Rev. Bolen in February 1, 1961, the stunned congregation was held together by Rev. Bartley and the leadership of the Rev. E. Hoyt Kerr of First Presbyterian Church. When Rev. Bartley left in August that year, Dr. Lee O. Scott of Denison University filled the pulpit.

On October 16, 1961, a call was extended to Rev. Robert Cleveland Holland. At the end of the year, the congregation called its first associate pastor, the Rev. Wallace G. Winegard. Both were installed on February 26, 1962. Also serving during the Rev. Holland's tenure were associate pastors the Rev. David Young and Harold Mullett.

For Second Presbyterian's 125th anniversary celebration in 1961, the Rev. Eugene Carson Blake spoke.

The Rev. Charles Dougherty began his 15 1/2 year ministry in 1967. During these years, Second Presbyterian experienced its largest membership gains, with an increase of more than 300. In addition, the budget grew by more than \$170,000.

John E. Hess served the church as associate minister from 1970 to 1972.

The Rev. Fred Homrighouse, minister of visitation, and his wife, Elaine, joined the church staff in 1971. After serving this congregation and the members of Fairmount Presbyterian Church southeast of Newark for eight years, Rev. Homrighouse died suddenly. Elaine remained an active member of the Second Church staff until 1983, when she moved to New York.

In 1974, the congregation celebrated the 100th anniversary of the first service of worship in, and the dedication of, the present sanctuary. Two former ministers, Dr. Swaim and Dr. Holland participated in the ceremonies.

After Rev. Dougherty left Newark for Libertyville, Illinois, in 1982, Dr. George Parkinson, who served the church as pastoral associate, became interim minister. He kept the spirit alive and the congregation growing until Second Presbyterian called Dr. Gary Stratman as senior pastor in October, 1983. The next year, Rev. Marcus Grodi began serving the church as associate minister. His move to Hanover Presbyterian Church as senior minister in early 1986 recalled the close ties the two churches share.

IT IS MORE BLESSED TO GIVE THAN TO RECEIVE (ACTS 20:25)

In the last 25 years, the area of Second Presbyterian that has shown the greatest growth is the outreach program. The ministers serving the congregation have shown members that the best way to grow is by giving of their time, talents and monetary resources to others.

Every year, the amount of money given by Second Presbyterians to persons outside the church has increased. For example, in 1985 benevolence giving totaled \$62,660. These funds helped, among others, disadvantaged children and parents, colleges, alcoholics, the visually impaired, the hungry, the terminally ill, and our own distressed brethren in the Third World.

One of the main community programs receiving financial assistance from the church is Spencer House. This half-way house helps people recovering from

chemical dependencies return to normal, productive lives.

Second Church's service to the community goes beyond money, to touch the area's spiritual nature through its ministry.

The radio and telephone help the church send the message of God's love past the walls of the building. Each Sunday, Newark radio station WCLT carries the morning worship service so members and others who are unable to attend services may still benefit from the inspiration of the music and the Word of God. During the week, Sentence Sermon Telephone is available to anyone in the community who needs a moment of reflection or uplifting.

The Healing Ministry of the church suggests that the core of every life is the soul. If the soul is sound, health flows through the body and spirit. On the first and third Tuesdays of each month, an evening service is designed to answer the personal need for treatment of spiritual ills with the healing touch of Christ.

As society changes, more people are becoming or remaining single. In 1984, Second Church, recognizing the need for a singles ministry in the community, created the Gnu Club, an interdenominational Christian singles group. Today, single members of several area churches join those from this church for weekly fellowship and recreation.

Another growing part of the church and society is its seniors. Answering this need, Second Presbyterian created the Second Thursdays for older members. They meet monthly for good food and interesting programs.

In order to ensure that Second Presbyterian Church continues to be a caring church, it launched the Stephen Series training to equip Christians for the work of ministry as caregivers. Through it, lay people learn to bring God's care to others in the congregation and the community - Christ caring for people through people.

WHEN THE SPIRIT OF TRUTH COMES...HE WILL DECLARE TO YOU THE THINGS THAT ARE TO COME (JOHN 16:13)

In its 150th year, Second Church entered the computer age. Now among the office equipment is a personal computer that will be used to store financial records, membership rolls and inventories. As technology advances, it is difficult to predict how many more uses there might be for a computer in the church.

Second Presbyterian Church has grown physically and spiritually, striving every day of the past 150 years to serve Jesus Christ through its programs and people. Faith in a loving God created this church and nurtured it through good and bad times. Our glorious history is a reminder of God's faithfulness and of the constant need to continue to discover and proclaim God's purpose in Newark, Ohio, and in the world.

*COMPILED AND WRITTEN BY CHARLES K. PRESSLER
and BETH PENNINGTON BLACK
1986*

Chapel

- then -



- now -

Second Presbyterian Church Sanctuary

- then -



- now -



175 Years in Service of Our Lord (1986-2011)

The story of Second Presbyterian Church continues where the history of the first 150 ended, adding 25 more years of challenges and blessings.

Dr. Gary Stratman, called as senior pastor in October of 1983, welcomed to church leadership Rev. James R. Neumann as associate pastor in February of 1988. Dr. Stratman moved to another call in Springfield, Missouri, in 1990.

Dr. George Parkinson served as interim pastor with the help of interim associate pastors Rev. Carol R. Weiss and Rev. James M. Moran, who stepped in as interim pastor when the congregation was saddened by the death of Dr. Parkinson in the summer of 1991. A book of Dr. Parkinson's sermons was published in 1994.

Rev. Moran stayed on as part-time interim associate pastor when Rev. Charles Denison came to Newark as senior pastor in December of 1991. At this time, church membership was 1,050. Rev. Elizabeth C. Runkle was installed as associate pastor in January of 1993 and remained in this role until February of 1995. (Her last name became Runkle-Edens after her marriage in October of that year.) Rev. Denison moved to a call in Indianapolis in July of 1993.

Rev. Robert E. Salmon became designated pastor in early 1994 and laid the foundation for a long-term pastorate through October of 1996. Dr. Mitchell R. Van Metre was called to Second Presbyterian as senior pastor in January of 1997. Joining him were Dr. A. Bruce Henderson, parish associate, and Michael W. Smith, membership pastor. Dr. Van Metre resigned, effective June of 2006. During Dr. Van Metre's tenure, the Forty Days of Purpose Program was introduced and multiple small study groups were formed, some of which are still intact today. Other ministries included outreach to those in need, providing shelter, food, counseling, and spiritual nourishment at Saturday evening services. Also begun was a contemporary worship service on Sundays at 11:00 A.M.

Rev. Oluf Kongshaug came out of retirement and served as interim pastor from fall of 2006 to December of 2009. Linda Hutchinson served as certified lay pastor during this time. Rev. Kongshaug prepared church members to welcome Rev. Charlie Smith in January of 2010. In his first year, Rev. Smith introduced the enlightening challenge of reading the Bible in its entirety in ninety days. The acceptance of this challenge proved rewarding for many of our members.

MUSIC MINISTRY

Dedicated members of the Chancel Choir and Chancel Bells continue to glorify God through music. They're accompanied by the Hook & Hastings pipe organ, which was enlarged through the years to 32 ranks. It is the largest pipe organ in Newark with a value of nearly \$750,000. In 1999, a Musical Instrumental Digital Interface (MIDI) was added to allow more diversity, including digital sounds, and record and playback ability.

Our sanctuary hosts concerts for the community every year through the Mason/Earhart Music Endowment, established by gifts from Mary Florence Mason and Charles and Mary Alice Earhart.

CHURCH RENOVATIONS

Beginning in the late 1990s, Second Presbyterian church was renovated in four phases. Most of the work was done between 1998 and 2001. The final and largest phase included the dining room, narthex, sanctuary and chancel. The focal point in the newly renovated sanctuary is the beautiful wood covered arch with the inscription, "COME UNTO ME ALL THAT LABOR AND ARE HEAVY LADEN AND I WILL GIVE YOU REST." (Matthew 11:28)

Members who were instrumental in arranging financing for these renovations included Ben Finckel and Norm Sleight. Lou Reese donated funds for the narthex, and a plaque was placed there in recognition of the gift from Lou and her family. Church members Dori Griley and Carole Salome made many of the decorating decisions and the results are beautiful. Carole Salome, blessed with artistic talent, painted the murals, assisted by Norma Bartlett.

The latest church restoration project was in 2008. In June of that year, the newly renovated chapel was dedicated. The most notable change is the new location of the stained glass memorial window. It was moved from the north side of the chapel to the front, behind the communion table. The window was given in memory of Richard D. Weidner in 1967 by his family. The chapel itself was given to the church in memory of Cathrine Latimer Elliott in 1951. Her family also contributed to this recent restoration.

**...WHAT DOTTH THE LORD REQUIRE OF THEE, BUT TO DO
JUSTLY, AND TO LOVE MERCY, AND TO WALK HUMBLY WITH
THY GOD. (MICAH 6:8)**

In recent years, our church outreach has gone global. We support missionaries in Haiti, Peru, and Iraq. The church also sponsored the "ARK Project," which raised funds to provide families in developing countries with farm animals through Heifer International. Another endeavor is our on-going support for Cents-Ability, a part of the Presbyterian Hunger Program, whose goal is to "alleviate hunger and to eliminate its causes."

Our church members are a generously giving group and have helped to sharpen our focus on meeting community needs. Second Presbyterian joined with a coalition of local churches which has enhanced local support for Habitat for Humanity. The Food Pantry housed in our church has expanded both in size and in numbers of people served. It is a twice a week, year round service to the community.

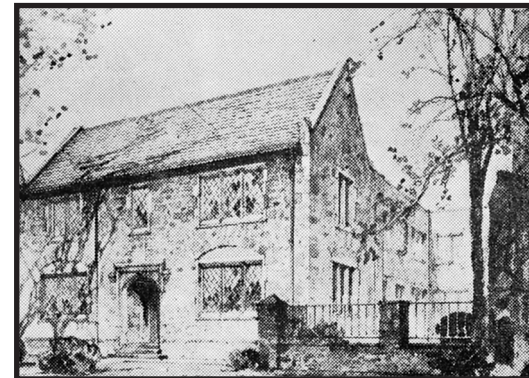
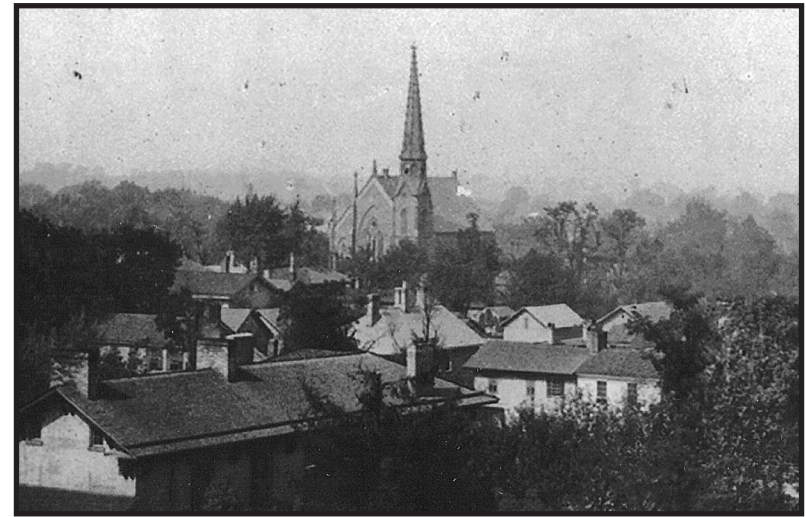
Continuing to seek what the Lord requires of us, we look to the future. As we seek guidance to walk humbly with Him, we grow spiritually, serving God, our beloved church, and one another.

COMPILED BY KAREN BUNNING, NORMA BARTLETT, and BETH BLACK
WRITTEN BY BETH BLACK

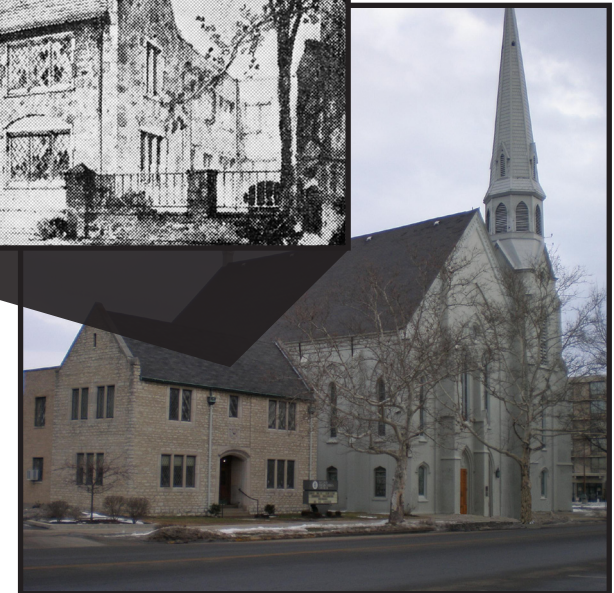
2011

Second Presbyterian Church

Oldest known photo taken in 1871



*Church Annex at it's
dedication in 1930*



Second Presbyterian Church and Annex as viewed from Church Street.

TRUSTEES (cont.)

Lawrence A. Brough
John Cocanour
Mrs. Gordon K. Forster
Mrs. Cyril G. Ransopher
Mrs. Sandy Bondy
Mrs. Edward Cobb
Victor A. Joyner
David Myers
Robert Baldwin
J. Timothy Evans
Mrs. Dean (Judy) Jarnac
Mrs. Barb Ripko
David C. Anderson
Charles E. Earhart
Mrs. Norma Franklin
Mrs. Jay (Ann) Hinze
Miss Karen Bunning
Mrs. Richard (Sandy) Frost
Jerry Krebs
Charles R. Whitefield

January, 1987

Joanne Hostetter
Liz Parker
Gary Ryan
David Schuman

January, 1988

Dana Hammond
Bernice Kuhn
Dan McKay
Georgia Miller

January, 1989

Neil Milford
Judy Riggs
Becky Snyder
Richard VanWinkle

January, 1990

Jenny Chase
Jerry Cotterman
Charles Earhart
Diana Kashner

January, 1991

Lee Dougherty
Carol Gough
Doug Kullman
Carolyn Myers

January, 1992

Peter Hays
Bernice Kuhn
John Lindsey
Georgia Miller

January, 1993

Bob Pflaumer
Dean Thomson
Norma Franklin
Peg Danver

January, 1994

Ann Hinze
Ken Joyner
Jack Lytle
Rebecca Snyder

January, 1995

Alan Deeds
Robert Luikart
Jim McNenny
Steve Petty

January, 1996

Betsy Cobb
Jack Dougherty
Phil Fronckel
Anita Stickle

January, 1997

Mary Ann Barnett
Nancy Hafer
Jim Roller
Alex Vasiloff

January, 1998

Sue Henry-Mounts
Ted Kalb
Bernice Kuhn
Bryce Peterson

January, 1999

Dana Hammond
Suzanne Parero
Richard Rhodes
Christie Williams

January, 2000

David Gough
Sue Miller
John Reid
Carole Wachtel

January 2001

Ray Gough
Cynthia Wolfe
Gail Anderson
Mike Stansell

January, 2002

Carolyn Gosney
Charles Wells
Tunis Baxter
Beth Barker

January, 2003

Kelly Baldwin
Scott Bartlett
John Barker
Christie Miskell

January, 2004

Jim Hutchinson
Stan Kaiser
Becky Kirk
Colleen Nipps

January, 2005

Beverly Redman
Mark Doughty
Ben Finckel
Lloyd Rife

REGISTER OF PASTORS

1836 - 2011

Alexander Duncan.....1837-1854	Norman S. Fedderly - Associate.....1972-1975
S.J. Humphrey.....1854-1861	George E. Parkinson - Pastoral Associate...1979-1982
Rollin A. Sawyer.....1862-1866	George E. Parkinson - Interim Minister...1982-1983
Daniel Tenny.....1867-1871	Gary D. Stratman - Pastor.....1983-1990
Howard Kingsbury.....1871-1877	George E. Parkinson - Pastoral Associate...1983-1991
George A. Beattie.....1878-1880	Marcus W. Grodi - Assistant Pastor.....1984-1986
R. R. Sutherland.....1880-1887	James R. Neumann - Associate Pastor...1998-1990
Julius W. Walden.....1888-1892	Carol R. Weiss - Interim Pastor.....1990-1991
Frank Granstaff.....1892-1902	James M. Moran - Interim Pastor.....1991-1992
T. A. Cosgrove.....1904-1912	Charles S. Denison - Pastor.....1991-1993
Don D. Tullis.....1913-1918	Elizabeth C. Runkle - Associate Pastor...1992-1995
Benjamin R. Weld.....1919-1923	Robert E. Salmon - Designated Pastor...1994-1996
Otis G. Dale.....1923-1926	Mitchell R. Van Metre - Pastor.....1997-2006
Harold F. Wonder.....1927-1944	Richard K. Gelson - Associate Pastor...1998-1999
Robert L. Swaim.....1946-1951	Bruce A. Henderson - Parish Associate...2000-2005
James S. Bolen.....1951-1960	Michael W. Smith - Commissioned
David G. Forsberg - Assistant.....1954-1958	Lay Pastor...2003-2005
Neal A. Bartley, Jr. - Assistant.....1958-1960	Oluf Kongschaug - Interim Pastor.....2006-2009
Robert Cleveland Holland.....1961-1966	Linda Hutchinson - Certified Lay Pastor...2006-2009
Wallace G. Winegard - Associate.....1961-1965	Charles C. Smith III - Pastor.....2010-Present
David Cook Young - Associate.....1965-1969	
Harold William Mullett - Assistant.....1966-1969	
Charles J. Dougherty.....1967-1982	
John E. Hess - Associate.....1970-1972	
Frederick M. Homrighouse - Minister	
of Visitation...1971-1979	

CLERK OF SESSION

James Young.....1837-1858	C. F. Tomlinson.....1952-1956
Matthew Newkirk.....1858-1870	Roland J. Esper.....1956-1957
W. T. Evans.....1870-1881	Charles K. Pressler.....1958-1961
John S. Bradley.....1881-1889	George J. McDonald.....1962-1968
Charles H. Newkirk.....1889-1893	John J. Morehead.....1968-1970
W. T. Evans.....1894-1902	James T. Waller.....1970-1976
T. M. Edmiston.....1902-1904	Jeanne Waller.....1976-1992
W. T. Evans.....1904-1908	Barbara Kanuch.....1992-2003
T. M. Edmiston.....1908-1934	Douglas Kullman.....2004-Present
John A. Wintermute.....1935-1944	
Ernest T. Johnson.....1944-1952	

The Trustees are now elected as Elders

REGISTER OF ELDERS

Installed 1836 - 1861

Asa Beckwith
Jonas Ward
James Young
Samuel D. King
Benjamin Ellis
A. L. Towne
John Metcalf
Matthew Newkirk
George L. Mills

Installed 1861 - 1886

John B. Hunt
George A. Walker
William A. King
William T. Evans
L. P. Coman
George B. Scott
John S. Bradley
John B. Kilpatrick
Charles H. Newkirk
Abram Miller

Installed 1886-1911

Albert E. French
Harry H. Griggs
John Hetrick
John McCahon
James Larimore
Jacob V. Burner
George P. Weber
Enoch Watkins
Edwin Wood
Thomas D. Owens
Thomas M. Edmiston
William C. Hall
Edward P. Childs
Cyprus G. Nevins
Richard Shide
P. S. Phillips

Installed 1911 - 1936

J. B. Fulton
Wilson Hawkins
Archer W. Patton
O. C. Parrill
D. M. Jones
Sherman J. Baggs
John A. Wintermute
Fred C. Evans
Charles L. Flory
Edward C. Miller
Louis C. Wolff
W. C. Windle

Wilfred R. Owen
Kenneth C. Hall
R. D. McClaran
Brooks Smith
A. B. Schauweker
E. C. Kuhn
O. E. Pore

Installed 1936 - 1961

Everett D. Reese
Ernest T. Johnson
Ralph S. Wyeth
Ray D. Davis
Charles D. Rankin
Roland J. Esper
Arch S. Waller
Thomas E. Norpell
C. F. Tomlinson
Elbert W. Bausman
Robert D. Green
James T. Elliott
Charles J. Folger
Jack T. Lytle
A. C. Siefert
Clayton A. Smucker
Harold L. Ballinger
George J. McDonald
Robert Church
Earle C. Sleeth
Palmer Jones
Ferris S. Owen
Harvey J. Lowe
Dr. Charles S. Baldwin
Ralph T. Brannan
Charles K. Pressler
Roger D. Smith
Dr. John Chynoweth
G. A. Hoffman
Harold G. Hayes
Dr. Carl Petersilge
Harry O. Youngquist

A. R. Morrison
James L. Gordon
Max K. Douglas
Howard Bovard
Harrison L. Hays
Andrew Tyndall
John H. Weaver
Raymond L. Walker
Mrs. Norton S. Suter

Installed 1962 - 1978

Willis M. Rees
George Kreidler

Robert VanVoorhis
John Moorehead
Dr. Edward McFadden
Gilbert W. Stewart
LaForest Smith
Richard Cottrell
Cyrus G. McKinney
Mrs. A. L. Chynoweth
William T. Yost
William R. Gale
G. Leonard Feightner
J. Arther Young
William T. McConnell
Russel Bunning
Norman R. Sleight
Mrs. Richard Hall
Winston C. Allen
Arthur B. Crawford, Jr.
Roy Crenshaw
A. Jerome Grundies
G. Alfred Krebs
Dr. Ralph E. Pickett
Robert W. Mentzer
C. G. Ransopher
Mrs. Willis M. Rees
Ray Gough
Mrs. Harold Kelch
Jon R. Spahr
James T. Waller
Howard W. Steele
Richard Danver
Jack Dougherty
Gail J. Wolfe
J. Arthur Young
James Hafer
Bryce R. Peterson
Cletis L. Roberson
Clayton Smucker
Mrs. Joseph E. Jones
Mrs. Carl Petersilge
Donald E. Jacoby
G. Alfred Krebs, Sr.
Mrs. Harold G. Hayes
Ronald G. VanAtta
Thomas LeBlanc
Ivan Dove
John L. Martin
Mrs. G. A. Hoffman
Russell Payne
Fred L. Pyle
Donald C. Staas
Paul L. Starlin
Neal Gamertsfelder
Mrs. J. W. Hunstman

Installed 1886-1911

W. L. Prout
F. A. Crane
Henry D. Woodbridge
J. W. Collins
Frank W. Elliott
James M. Maylone
Dr. John A. Mitchell
Jacob V. Burner
George L. Starrett
Fred C. Evans
Oriel C. Jones
Walter F. Upton
W. W. Gard
George A. Blood
Benjamin B. Jones
L. F. Carl
Lawrence M. Krieg
Charles L. Flory
A.B. Schauweker
Dr. Clark B. Hatch
Dr. Samuel D. McClure
R. A. Crawford
C. Harrington David
Mrs. James Currie
Mrs. W. C. Miller
Mrs. F. L. Jones
A.B. Crawford
Thomas J. Evans
Chandler J. Tucker
Carl J. Ankele
Jesse S. Elliott
George A. Ball
Frank A. Woolson
Everett D. Reese
R. D. McClaren
Almon H. Rickert
Brandt S. Hervey
William L. Grieser
Ernest T. Johnson
Elliott Forry
Michael Sachs
Dr. J. Park Shai
Felix Jones
O. E. Pore
Harvey J. Lowe
Ernest C. Kuhn
Fred C. Hall
Daniel Z. Forry
Ralph S. Wyeth

Installed 1936-1961

Frank Elliott
J. H. Haflich
Joseph C. Spencer

TRUSTEES (cont.)

A.B. Jones
R. S. Owens
Charles D. Rankin
J. C. Shreve
Ross S. Henderson
August P. Hess
George J. McDonald
Raymond D. Davis
Roland J. Esper
Henry Leslie
N. L. Cushing
Willis W. Greer
Donald Johnson
Joseph H. Kuhn
Randall Duncan
Lloyd Scarbrough
Gale Dennis
Palmer Jones
James T. Elliott
John Waring
C. F. Thomlinson
Arch S. Waller
D. Earl VanNess
Jack T. Lytle
Ferris S. Owen
Winston C. Allen
Charles K. Pressler
J. F. Haynes, Jr.
Boyd W. Bowden
Harold L. Ballinger
Dr. John Chynoweth
Dr. Harry Butler
R. E. Buckey
Darsie A. Green
Ray L. Hull
Jessie Elliott, Jr.
Perry Cook
Thomas E. Norpell
Willis M. Rees
Robert F. VanVoorhis
C. C. Bemiller
Paul M. Marsh
William K. Sidwell
Frank S. Farrington
G. Alfred Krebs
Melvin C. Ree
Raymond L. Walker
Paul B. Brown
Ben H. Snyder
Richard B. Hall
W. M. Klare, Jr.

Installed 1962-1978

Mrs. Thomas H. Rugg
Frank H. Boyce

Richard L. Senff, Sr.
Clarence W. Feil
Richard H. Morgan
Burton Class
Robert Krumlauf
Ronald VanAtta
John W. Reid
James H. McNenny
Mrs. Donn Alspach
John Cocanour
James T. Holden
Charles H. Price
James Roller
Mrs. E. O. Williams
Theodore E. Weidner
J. Robert Shepard
Robert Baldwin
Myron E. Price
George L. Hatch
Clyde Bartlett
John Lindsey
Robert Luikart
Al Spillman
R. Thomas Swank
Mrs. C. R. Bunning
David Anderson
Gary W. Burger
W. E. Cain
Harry Breneman, Jr.
Mrs. Roy Crenshaw
Jack T. Lytle
Mrs. Melvin C. Ree
Paul Marsh
Steve Petty
Robert VanVoorhis
E. E. Bausman
Joseph H. Curl
Mrs. Charles Baldwin
Edward S. Cobb
James R. Low
Mrs. Edwin Ourant

January, 1979-1986

Miss Karen Bunning
William Henry
A.T. Payne
Mrs. David Samson
Mrs. Joseph W. Huntsman
G. A. Krebs, Jr.
Raymond L. Kress
Richard M. VanWinkle
Walter S. Riggs
Mrs. Charles R. Scott
Jerry L. Severson
Mrs. C. Zane Wachtel

DEACONS (cont.)

January, 1991 Willard Baxter Vivian McNenny Debi Severson Roy VanAtta	January, 1998 Jamie Hartman Tom Henry Harold Kelch JoAnne Moreland	January, 2005 Carol Kelch Kandi Cook Ann Ogle Joe McHugh
January, 1992 Kathleen Anderson Colin Baxter Charles Wells Joyce Westfall	January, 1999 Robert Porter Jim Snyder Dora Thomson Debbie Whitefield	January, 2006 Phil Fickes Ann Kester
January, 1993 Ron Bartlett Dorothy Harvey Diane Gamerstfelder Beth Morris	January, 2000 Craig Baldwin Joanne Prugh Hank Speaks Carolyn Thompson	January, 2007 Barb Emler Cindi Barber Linda Foltz
January, 1994 Scott Bartlett Jean Heightshoe Dee Hill Larry Moreland	January 2001 Nancy Evans Becky Kirk Ed Rizor Mike Sumption	January, 2008 Lori Feightner Brian Sherman
January, 1995 Harold Heightshoe Sally Lytle Marje Payne Charles Wells	January, 2002 Beverly Redman Ronald Blake Bruce Anderson Barbara Kanuch	January, 2009 Marilyn Ambrus Mike Ambrus Bob Mader
January, 1996 Bob Baldwin Betty Cady Barbara Feightner Tom LeBlanc	January, 2003 Michael Ambrus Rob Harmon Ann Hinze Connie Johnson	January, 2010 Jackie Fox Bill Milbrandt Connie Salsberry
January, 1997 Larry Brough George Henry Ann Kester Jo Nelson	January, 2004 Jeanne Carskadden Phil Cook Bruce Guttridge Sandy Mercer	January, 2011 Beth Black Jean Heightshoe Dean Thomson

REGISTER OF TRUSTEES

Installed 1836-1886 Asa Beckwith Adam Fleek Benjamin Ells Charles Follett Starr Baldwin William Shields E. S. Woods John McCune Samuel D. King William B. Woods	F. H. Woodbridge L. P. Coman A. H. Doolittle A. L. Towne James Young Matthew Newkirk John S. Fleek F. H. Wing William T. Evans William A. King C. H. Newkirk	Albert Sherwood John E. Dean William Franklin L. B. Harris L. J. Johnson W. N. Fulton John S. Bradley W. S. Thacker Abram Miller
--	--	--

ELDERS (cont.)

Installed 1962 - 1978 (cont.) Col. Elon Long William S. Moore, III Harold K. Prugh Donn Alspach Mrs. John A. Weir Mrs. C. Russel Bunning James H. Hansen Fred G. Krautz A. Hank Speaks Daryl D. Sullivan	Mrs. W. M. (Kathryn) Rees Jerry Severson Dean Thomson Mrs. Zane (Carole) Wachtel Mrs. Homer (Dee) Hill Robert Luikart Bruce Mainland Mrs. Cyril (Barbara) Ransopher Mrs. R. Fred (Ann) Rose A. Hank Speaks	Robert Fox Tom Henry Carole Wachtel
Installed 1979 - 1986 Mrs. David P. Anderson Mrs. Willard T. Baxter Jerry Izor Dr. Harold E. Kelch John R. Lindsey Robert Meyer Mrs. David Myers Mrs. L. C. Acklin Richard Hall Charles D. Hardy G. Thomas Henry Mrs. O. Cash Misel, III Norman R. Sleight Mrs. James T. Waller Joseph W. Huntsman Mrs. G. A. Krebs, Jr. Mrs. Stephen Mushrush Stephen F. Petty Roderic J. Yost Mrs. James T. Waller W. Eugene Cain Carl B. Havens Miss Dana Herreman Mrs. Edwin L. Ourent R. Fred Rose Mrs. Margaret G. Sabatino Mrs. James Bope Norman J. Klym O. Cash Misel III Mrs. David Samson Mrs. R. Fred Woljen Bryce R. Peterson David P. Anderson Loren H. Briggs Mrs. Richard (Peg) Danver Robert L. Kuhn Mrs. Bruce (Sue) Ryan Mrs. Ronald (Emma Lou) VanAtta Mrs. James (Kathy) Fickes John Marriott	January, 1987 Betty Cady John Carlson Carol Dougherty Terry Hanna Steve Petty Chung Suh	January, 1993 Mitzi Krebs Kathy Renard Russ Payne Ruth Cooper Glen Smith Ben Finckel
January, 1988 Paul Alheim Joe Demeter Marjorie Eckhardt Sally Henry Sue Moore Larry Seitz	January, 1989 Larry Brough Norma Franklin Shari Fronckel Carol Kelch Richard Nelson Ben Snyder	January, 1994 Miki Hempleman Barbara Joyner John Lyle Jim Owen Ann Rose Larry Seitz
January, 1990 Pat Cain Earl Hawkins Barbara Kanuch Leland Lescalleet Jean Petty Leon Spencer	January, 1991 Karen Bunning Bob Baldwin Ray Gough Mary Pierson Dave Samson Lynne Sidner	January, 1995 Norma Bartlett Rebecca Lawyer Amy Mader David Myers Dan McKay Rod Yost
January, 1992 Barbara Chapman Jan Row	January, 1996 Ed Anderson Jonda Clemings David Hall Carole Koontz Nancy LeBlanc Dave Schuman	January, 1997 Phil Fickes Kay Finckel John Martin Barbara Ransopher Judy Riggs Roy VanAtta
	January, 1998 Dori Griley Roger Hempleman Lynne Kress Carole Salome Charles Wells Charles Whitefield	

ELDERS (cont.)

January, 1999

Jenny Black
Phyllis Kraner
Jim McNenny
Colleen Nipps
Bob Pflaumer
Glen Smith

January, 2000

Beth Black
Warren Koontz
Doug Kullman
Barry Wood
Sally Lytle
Rick Nabors

January 2001

Dean Thomson
Betsy Cobb
Lee Dougherty
Jo Nelson
Georgia Porter
Skip Salome

January, 2002

Jay Barker
Marlene Patterson
Robert Baldwin
Callie Harmon
Richard Donnard
Judy Pflaumer

January, 2003

Kelly Fenton
Lee Dougherty
Roger Hempleman
Dan McKay
Barbara Pettit
Roy VanAtta

January, 2004

Karen Bunning
Fred Hartman
Connie Koontz
Chris Martin
Mike Stansell
Jeanette Vasiloff

January, 2005

Ed Rizor
Carol Becktell
Chuck Pierson
Kelly Smith
Fred Martin
Sara Joyner

January, 2006

Mike Ambrus
Kathleen Anderson
Joyce Westfall
Chuck Whitefield
Leland Lescalleet

January, 2007

John Barker
Dan McKay
Ellie Hempleman
Jo Nelson
Lynda Nabors

January, 2008

Mary Ann Barnett
Kathy Fickes
Sally Henry
Tom LeBlanc
Randy Nipps

January, 2009

Betsy Cobb
Stan Kaiser
Doug Kullman
Carole Wachtel
Charles Wells

January, 2010

Phil Cook
Roger Hempleman
Amy Mader
Sandy Mercer
Rick Nabors

January, 2011

Phil Fickes
Dori Griley
Nancy LeBlanc
Lee Lescalleet
Hank Speaks

DEACONS (cont.)

Louis Goodrich
Mrs. Raymond Solt
Stewart Sedgwick
Mrs. John Weaver
Mrs. David Hazlett
Mrs. Lee Pearson
Mrs. Donald Truesdell

Mrs. Hearbet G. Nye
Dr. T. Thomas Mills
C. Wayne Crist
Clifford VanDyke
Harold Prugh
E. W. Clutter

Mrs. Earl Roberts
Mrs. Peter Lilly
Miss Katherine Flory
Mrs. Theodore Kemp
Lloyd W. Scarbrough
Miss Betty Fulke

Mrs. Thomas Henry
Lawrence A. Brough
Albert H. Speaks
Mrs. Paul B. Brown
Mrs. F. W. Englefield
Mrs. L. James Gordon

Mrs. James M. Kimbrough
Mrs. Jack T. Lytle
Mrs. C. G. McKinney
Robert E. Cox
Mrs. Richard W. Danver
Mrs. Raymond L. Hull

Mrs. Alfred T. Johnson
Mrs. Richard Kibler
G. Thomas Henry
W. N. Stassen
Mrs. M. Graham Sabatino
James E. Grower

Loren H. Briggs
Robert Meyer
Mrs. A. T. Payne, Jr.
Mrs. G. A. Krebs, Jr.
George Larason
Robert E. Lewis

Carroll C. Griggs
Mrs. Thomas LeBlanc
Von C. Hickman
Joseph W. Huntsman
Mrs. B. H. Snyder
Mrs. Norman R. Sleight

January, 1979-1986

James Bope
P. Robert Hansel
Mrs. Bryce Peterson
Mrs. Daryl D. Sullivan

R. J. Carskadden, Jr.
Mrs. Marilyn Jean Conard
Mrs. Ronald G. VanAtta
Mrs. George Mackey
Paul L. Alheim
C. Wayne Crist
Fred L. Pyle

Mrs. Gary A. Ryan
Mrs. Jack Dougherty
James Philip Fickes
Mrs. Angnes Collett Howard
Larry D. Seitz
Mrs. Dana J. Hammond

Terry J. Hanna
Peter F. Hays
Mrs. Alex Vasiloff
Mrs. Donn (Marilyn) Alspach
G. C. (Jerry) Bence
Mrs. Steve (Jean) Petty

John Roberts
Delou Bowers
Mrs. Kenneth (Jennifer) Chase
James Harvey
Mrs. Young (Soon) Moon
James Snyder

Mrs. Gene (Pat) Cain
John Cooper
Leland Lescalleet
Mrs. James (Maxine) McBride

January, 1987

Mike Craig
Joe Fulk
Debbie Kullman
Beverly Lebold

January, 1988

Charles Baldwin
Robert Baldwin
Lynne Donnovan
Dorothy Huntsman

January, 1989

Ray Boles
Kay Finckel
Kirk Homrighouse
Anita Wolfe

January, 1990

Gene Booher
Gail Craig
Leigh Sherman
Beverly Wince

REGISTER OF DEACONS

Established October 2, 1946

1946 – 1978

Mrs. Franklin Southard
Mrs. D. Earl VanNess
Mrs. W. C. Miller
Jesse S. Elliott, Jr.
Dr. Carl Frye
William L. Grieser
Ross S. Henderson
Joseph H. Kuhn
C. Don Lindrooth
George J. McDonald
Angelo Maschio
Jack Olpp
Mrs. Harold Ballinger

H. H. Parrett
Dana C. Savage, Sr.
Miss Marian Crandall
M. W. Burkhart
H. S. Swope
Howard Bovard
Mrs. Robert Kreager
Eugene H. Cooper
William H. Williams
Mrs. Norton Suter
Max K. Douglas
Paul M. Marsh
John H. Weaver
Miss Hazel Armstrong

Mrs. Harvey J. Lowe
Mrs. A. W. Sprowls
Robert Trout
Mrs. Robert Battat
Mrs. Thomas Rugg
Mrs. Lloyd Scarbrough
Mrs. Earle C. Sleeth
Mrs. Robert Bazler
Ralph Baldwin
James H. Orr
Andrew Tyndall
Mrs. L. C. Acklin
Mrs. Myron Price
Richard B. Hall